

## Ultimo™ Technical Data\*

### Basic installation

- Differential e.m.f Detector for each Spindle
- Individual Spindle and Section LED
- Production and Doffing Sensors for each Ring Frame
- Machine Station for each Ring Frame
- End Break and Doff Indication Lamps
- Communication: Wireless and TCP / IP
- Network Switches and Connectivity
- Machine Display Unit (MDU)
- Ultimo Server

### Additional Options

- Draft Monitoring
- Energy Monitoring (kWh per kg)
- Air Monitoring
- End Break Indication Lamps for three Levels
- Tab & Mobile App
- Ultimo on Web
- Roving Stop Motion
- **SpinBike**
- RH & Temp
- Pneumafil Suction Control
- Production & Energy Monitoring for Preparatory Machines

### Measuring Principle

- Individual Spindle : Differential emf Detection
- Production and Doff : Proximity Sensing
- Draft Monitoring : Proximity Sensing
- Energy Monitoring : CT

### Key Technology

- Detection of Rogue and Slip Spindle
- Twist Monitoring (TPI)
- Draft Monitoring
- Energy Monitoring
- Air Monitoring

### User Interface

- Large TV - Status Display
- Real Time Dash Board View
- Reports for Comprehensive Analysis
- Mobile App for Live Information

### Indication Lamps (Located at Head/End Stock, Section and Individual Spindle)

- Normal End Breaks
- Idle Spindles
- Slip Spindles (Two Slip levels exceeding the Set Limit)
- Rogue Spindles
- Normal Breaks exceeding the Set Limit
- Indication Lamp for pre-doff and doff

### Output Parameters

#### Numerical Results:

##### Off - Standard Positions and Deviations

- Rogue and Slip Spindle
- Deviation of Critical Parameters

##### End Breaks

- End Breakage Rate
- End Break Classification
- End Mending Time

##### Production

- Production
- Utilisation%
- Actual and Production Efficiency%

##### Stop

- Stop%, Stop History and Summary

##### Doff

- Doffing%, min / doff and Doffing min

##### Energy Monitoring

- kWh
- kWh per kg (Ukg)
- Power Factor
- Frequency
- 3 Phase Current & Voltage

##### Graphical Results:

- Cop Analysis
- Power Analysis
- Trend and Comparison

##### Ambient Condition

Particulars	Server	Machine Station
Temperature	20 to 27°C	20 to 50°C

##### Installed Power

- Single Phase 220V AC
- 500 VA for Server
- 50 VA for Coordinator
- 250 VA for Network Switch
- 250 VA for Machine Station

\* Subject to change without Prior notice



**premier evolvcis pvt. ltd.**  
SF No. 79/6, Kulathur Road  
Venkitapuram Post  
Coimbatore - 641 062, India  
Phone : +91 422 661 1000  
Fax : +91 422 661 1005  
E mail : sales@premier-1.com  
[www.premierevolvcis.com](http://www.premierevolvcis.com)

10000119

# Ultimo™

Ultimate Monitoring System  
ISM RSM PMEM SpinBike

# PREMIER

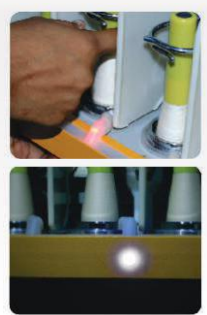


**iQ**  
intelligent QUALITY

- ### Comprehensive Productivity and Quality Monitoring
- | Production   | Utility  | Stops  | Quality   | End Breaks  |
|--|--|--|---|---|
| <ul style="list-style-type: none"> <li>Efficiency</li> <li>Utilisation</li> <li>gps</li> </ul> | <ul style="list-style-type: none"> <li>kWh</li> <li>Ukg</li> <li>wps</li> <li>RH &amp; Temp</li> <li>Comp.Air</li> </ul> | <ul style="list-style-type: none"> <li>Summary</li> <li>Reasons</li> </ul> | <ul style="list-style-type: none"> <li>Slip</li> <li>Rogue</li> <li>TPI</li> <li>Draft</li> </ul> | <ul style="list-style-type: none"> <li>eb/100sh</li> <li>em</li> <li>Idles</li> </ul> |

and most importantly **Exceptions...**

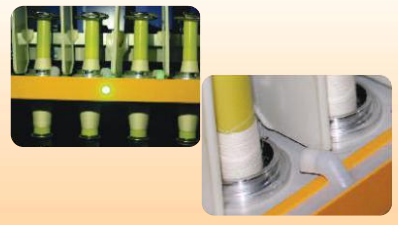
- ### Individual Spindle & Section LED Indications
- Easy to distinguish and indicates Yarn Break, Rogue, Slip and Idle Spindles with **Multi Coloured LED**
  - End breaks are identified **Instantaneously**
  - Differentiates the Ring Frame section that requires attention by the operator and maintenance staff



- ### Energy / Draft Monitoring
- All new **Energy Monitoring** with Comprehensive details
  - The Intelligent **Draft Monitoring** system helps to highlight and alert draft deviations



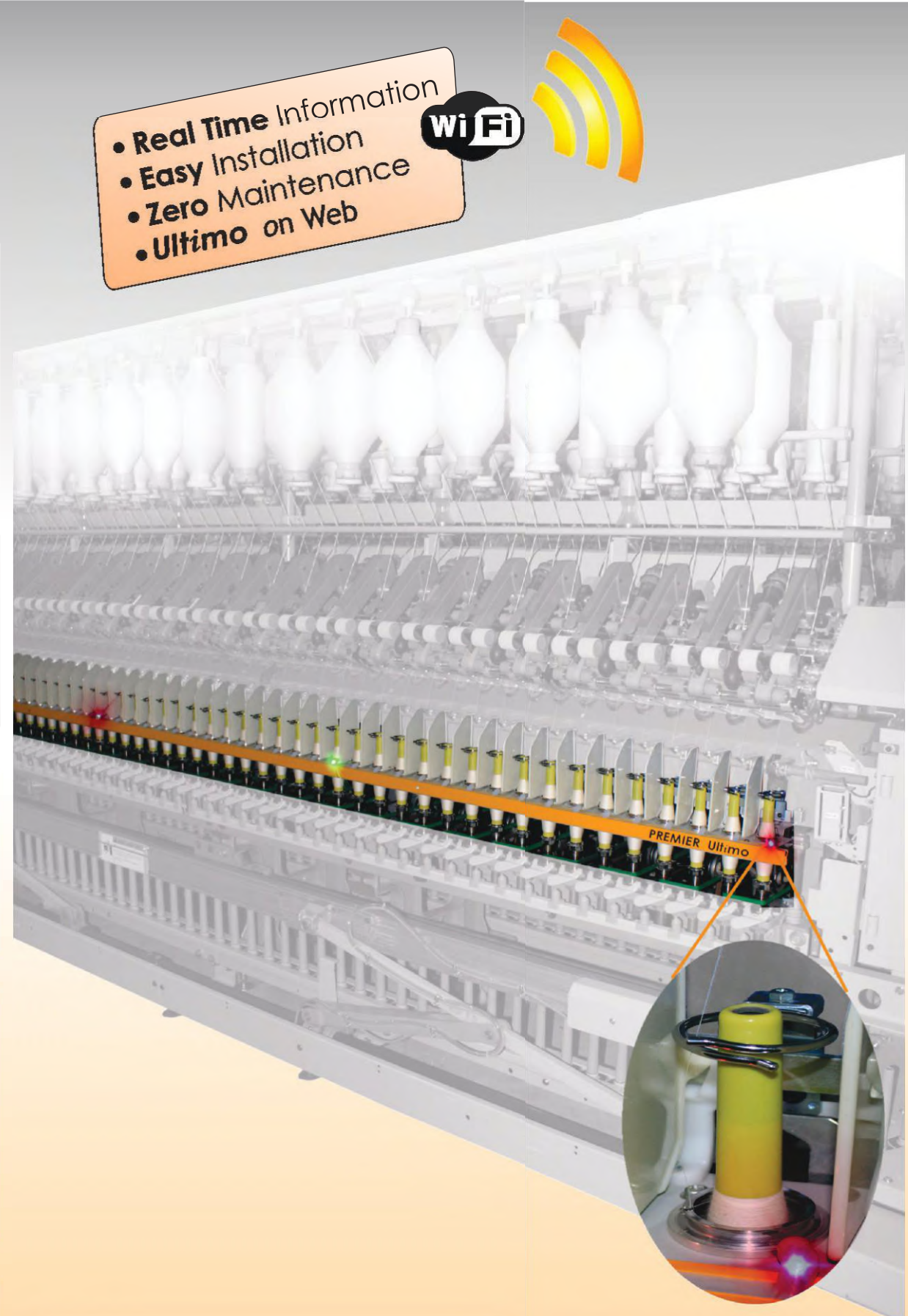
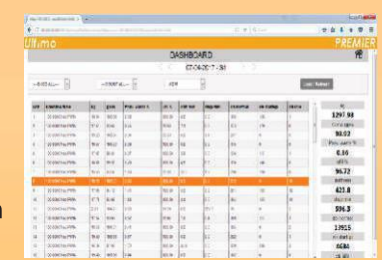
- ### Operator Friendly
- Yarn Break and Idle Spindles are distinguished by the flashing **White Section LED**
  - Rogue and Slip Spindles are identified by the flashing **Green Section LED**



- ### Machine Display
- Individual Machine display unit located at Head Stock provides the **Number of End Breaks, Rogue, Idle, Slip Spindle, End Mending Time, Spindle Speed** and **Efficiency** for quick decision by the operator to decide the Machine side that needs immediate attention



- ### Web based views
- Access **Ultimo** data online through web
  - Requires registration
- Information can be viewed from anywhere in the world

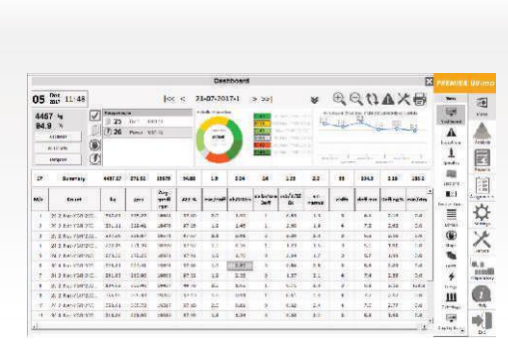


- Real Time Information
- Easy Installation
- Zero Maintenance
- Ultimo on Web

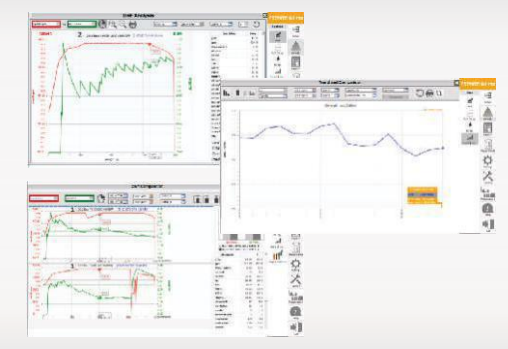


Ultimo Shed 1 PREMIER	
Efficiency%	Idle 0.1%
<b>95.0</b>	Breaks 0.8%
	Stop 1.6%
	Rogue 1.0%
	Slip 0.0%
30s - 2 frames	
Efficiency kg	tpi eb/100sh em doffs
90.6	330 20.0 9.8 3.2 4

- ### Large TV - Status Board
- Large Flat TV at vantage points to view exceptions
  - Real Time Display** of Shed performance can be visualised instantly



- ### Central Dash Board and Information System
- Extended and Comprehensive Information** of Ring frame viz. Count, Spindles, Machine & Machine Group, Operator etc.,
  - Highlight Exceptions** for all set parameters exceeding defined limits



- ### Analysis
- Cop Stage View** to analyse the effect of speed pattern on yarn breaks and other parameters
  - Trend and Comparison Charts** for analysing long term data
  - Comprehensive analysis of Power related information



- ### Mobile App
- Support for **Apple & Android**
  - Available as Management and Maintenance App
  - Ultimo Benchmark™** for all counts

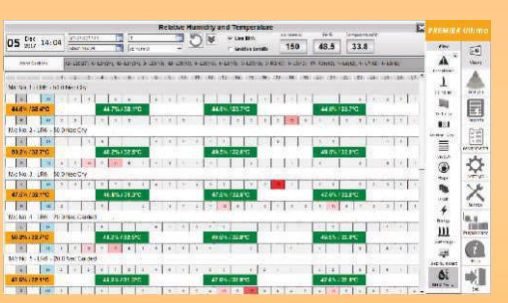
- ### Instant Alerts
- Receive **SMS Alerts** for any deviations
  - eMail** reporting to user defined Executive personnel



- ### Pneumafil motor suction control
- Pneumafil Fan Motor can be controlled based on end breaks to save power instead of running at constant speeds.



- ### Air Monitoring
- To monitor abnormal air consumption because of leakages and take remedial actions for reducing power cost.



- ### RH & Temperature Monitoring
- Average and position wise RH/ Temperature value as live views and reports
  - Helps to identify RH / Temperature deviations due to Various Ambient Conditions

# Ultimo SpinBike™

## Unique Features

Adding convenience to operator at work place motivates and increases productivity.

SpinBike integrated with PREMIER Ultimo is an essential tool for spinning mills which helps operator to

- Patrol quickly and directly reach the break positions based on spindle light indications,
- Prioritise the ring frame side to be attended,
- Reduce end mending time and
- Increase operator efficiency.

### Head Light for Navigation



### Auto illumination on Spindles

Ring frame spindle area illuminated automatically on both sides for attending breaks.



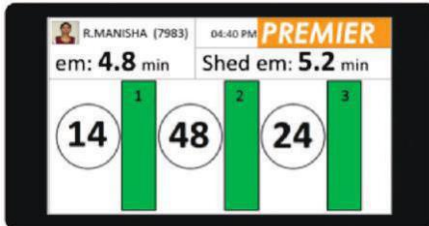
### Gadgets and Accessories

- Bike Dashboard
- Electric Horn
- Water bottle provision
- Inching provision
- Rear view mirror
- High capacity battery
- Adjustable Speeds
- Electric & disc Brake
- Waste basket



### Patrol as you wish

Highly convenient to patrol in spinning mills. Suitable for Ring frame operators, maintenance personnel and supervisors



### Ultimo Data Integrated

Ultimo data Integrated through Wi-Fi TAB. Helps Ring frame operator to monitor breaks and prioritize patrolling



### Ergonomic seating

Ergonomically designed seat with back rest and adjustable seat height adds comfort.



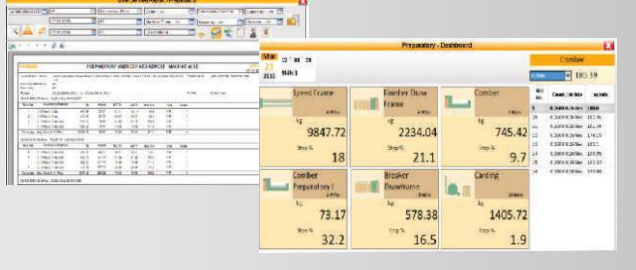
### Music on-the-go

Music system provided with wire-free head phones reduces fatigue to operators

# Ultimo™ PMEM

## For Preparatory

- Preparatory Dashboard provides production of the preparatory departments in one snap view with other key information like Utilisation etc...
- Detailed reports on preparatory department performance with user configurable parameters.



Integrated production status information on TV from Carding to Ring frame department in one view helps to assess production balancing levels

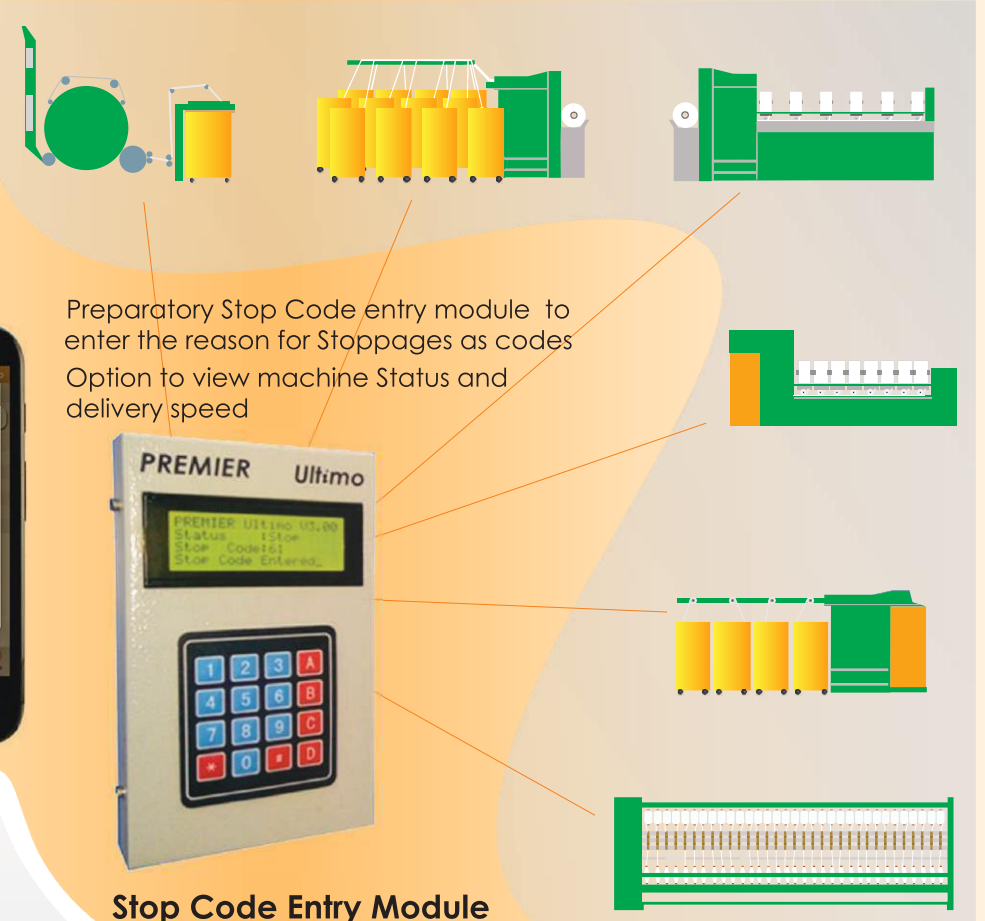
Ultimo	All Sheds	PREMIER
Carding	Comber Prep	Comber
2508	3733	3202
45.6%	52.3%	76.0%
Breaker DF	Finisher DF	Speed Fr
5196	3887	3822
77.0%	76.4%	71.4%
Spinning	TFO	
4131	928	
96.1%	70.2%	

Ultimo	Comber	PREMIER
kg	Low Efficiency Mics	
4921	06	77.5
	08	79.6
Efficiency%	04	79.9
	10	82.4
	07	85.0
	02	85.9

## Ultimo PM in Mobile App

Integrated information of preparatory machine performance in mobile app



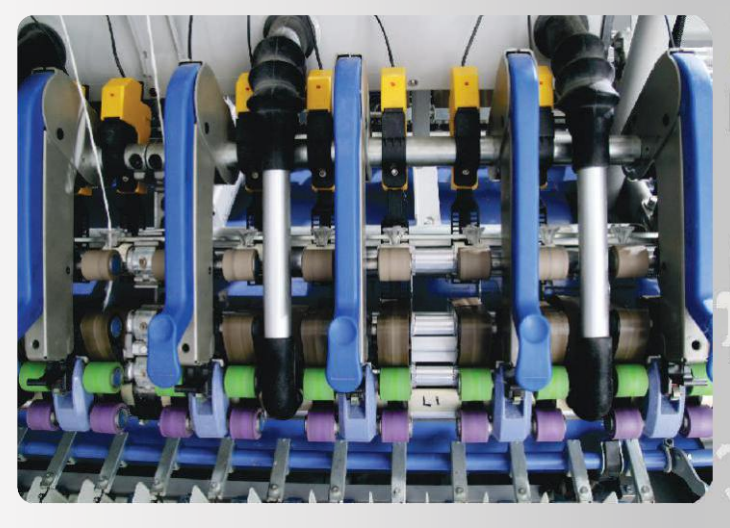
## Ultimo BenchMark™ in App



- Count, Parameter and Shift Selection
- BenchMarks Table with Achieved and Standard values
- Ultimo BenchMark™ available on Ultimo Main App
- Ultimo BenchMark™ available for all Popular counts (Carded and Combed)
- Automatic Ultimo BenchMark™ updation online
- gpps
- AEP
- % Loss – Normal breaks
- % Loss – Idle
- Doff%
- eb/100sh
- End mending time
- U/kg
- Power Factor

# Ultimo™ RSM

## RSM for Ring Spinning



- Stops the Supply of roving when yarn breaks
- Huge savings in **Pneumafil Waste**
- **Elimination of Roller lapping** and its subsequent problems like difficulty in Lap removal, Top roller and Apron damages, etc.,
- Available for Double Roving/Injection Slub
- Precise module for stopping the roving supply when yarn breaks
- Activates immediately after a yarn break
- Easier lock removal for starting the roving supply
- Very minimum maintenance required

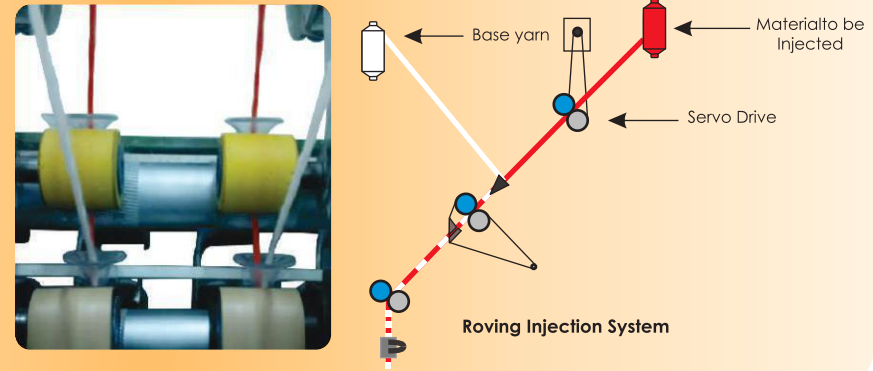
## RSM for Double Roving



- Innovative technology by Premier for double roving feeding mechanism
- Stopmotion sensor Module Positioned in-between Back and Middle roller
- Two Rovings passed over the sensor. If single Roving or Yarn Breaks, the sensor will stop the supply of both the Rovings with an LED indication

## RSM for Injection Slub

- No solution to stop base roving when yarn breaks until now... **PREMIER** has
- Simultaneous activation for both Injection & base roving material
- Helps to save expensive raw material
- Add-on module to RSM



## ROI Benefits

Area of improvements	Achieved levels by mills
Man Power reduction	25%
Component damages	100%
Waste% reduction	67%
Lighting reduction	22%
Productivity increase	20%
Energy savings	Rs.110/spindle/year
Pay Back period	9 months
Autowinder Efficiency increase	2%
Reduction in second quality yarn sales	33%

